

Universal Front Fork

FG 6200/6210

Spare Parts List



ADVANCED SUSPENSION TECHNOLOGY

SAFETY PRECAUTIONS

⚠ Warning!

The shock absorber/front fork/steering damper is an important part of the vehicle and will affect the stability.

⚠ Warning!

After installing the Öhlins product, take a test ride at low speed to make sure your vehicle has maintained stability.

⚠ Warning!

Some of Öhlins products contain pressurized nitrogen gas (N₂). Do not open, service or modify pressurized products without proper education (approved Öhlins dealer/distributor) and proper tools.

👁 Note!

Read and ensure you understand the information in this manual and other technical documents provided by Öhlins, before you use the product.

👁 Note!

Öhlins Racing AB can not be held responsible for any damage to the shock absorber/front fork/steering damper, vehicle, other property or injury to persons, if the instructions for mounting, usage and maintenance are not obeyed.

⚠ Warning!

If the suspension makes an abnormal noise, or the function is irregular, or if you notice any leakage from the product, stop the vehicle immediately and return the product to an Öhlins Service Centre.

⚠ Warning!

The product warranty shall only apply if the product has been operated and maintained in accordance with recommendations in this manual. If you have any questions regarding usage, service, inspection and/or maintenance contact Öhlins.

👁 Note!

When working with the Öhlins product, read the Vehicle Service Manual.

⚠ Warning!

This product was developed and designed exclusively for a specific vehicle model and shall only be installed on the intended vehicle model in its original condition as delivered from the vehicle manufacturer.

Contents

Figure 1 - FG 620 (gold), FG 621 (black) 3

SAFETY SYMBOLS

In this manual, mounting instructions and other technical documents, important information concerning safety is distinguished by the following symbols:



The Safety Alert Symbol means: Warning! Your safety is involved.

⚠ Warning!

The Warning Symbol means: Failure to follow warning instructions can result in severe or fatal injury to anyone working with, inspecting or using the shock absorber, or to bystanders.

👁 Caution!

The Caution Symbol means: Special precautions must be taken to avoid damage to the shock absorber.

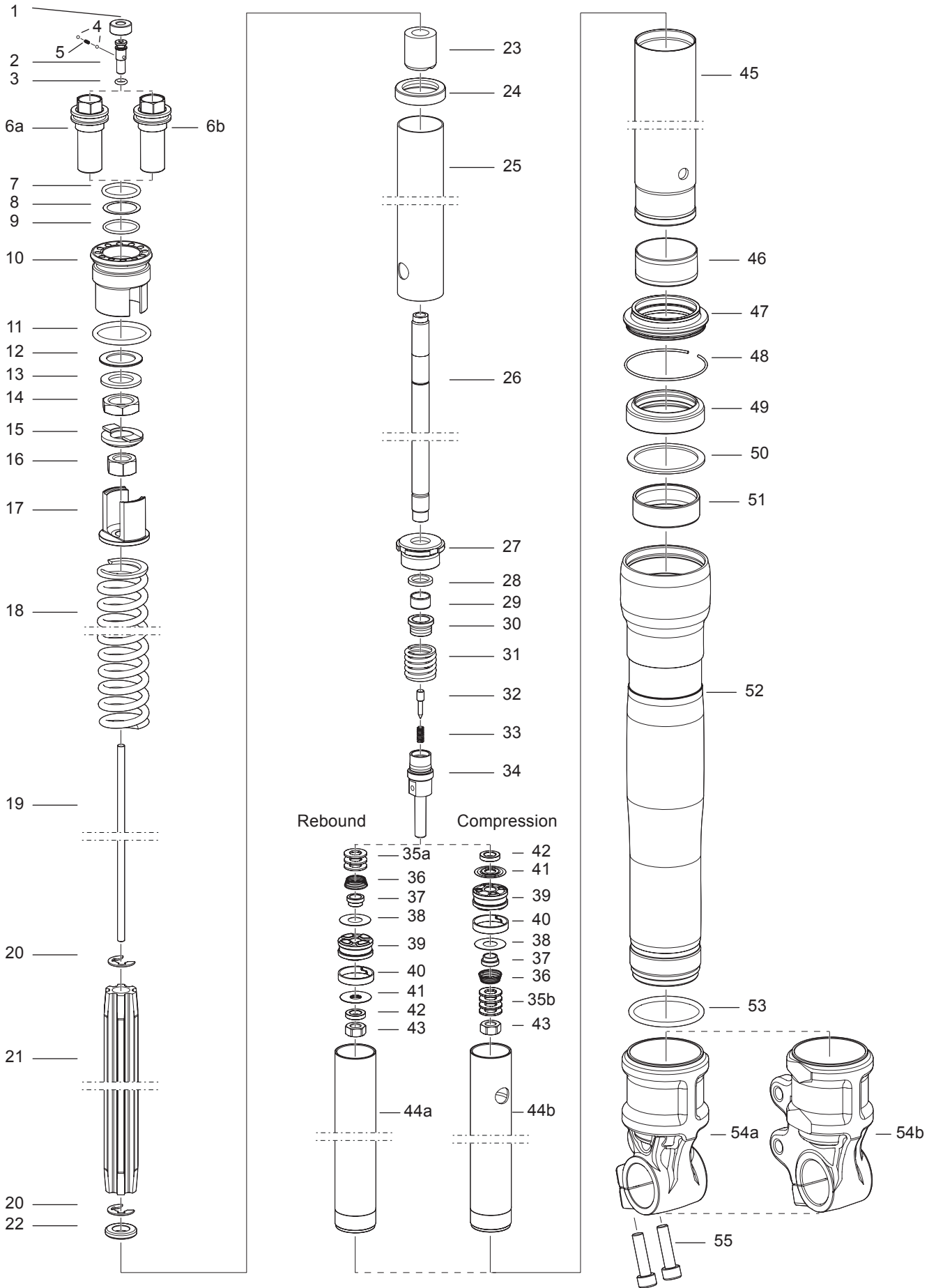
👁 Note!

The Note Symbol indicates information that is important regarding procedures.

© Öhlins Racing AB. All rights reserved.

Any reprinting or unauthorized use without the written permission of Öhlins Racing AB is prohibited.

Figure 1 - FG 620 (gold), FG 621 (black)



SPL FG 620 (GOLD)

Pos	Part No	Pcs	Description	Notes
1-1	04747-04	1	Cap	
1-2	04756-03	1	Adjuster	
1-3	04722-04	1	O-ring	
1-4	00884-04	2	Ball	
1-5	04727-01	1	Spring	
1-6a	24015-02	1	Adjuster Preload	Rebound side
1-6b	24015-01	1	Adjuster Preload	Compression side
1-7	24014-02	1	O-ring	
1-8	24013-03	1	Washer	
1-9	24014-01	1	O-ring	
1-10	24016-01	1	Adjustment housing	
1-11	24014-03	1	O-ring	
1-12	24013-02	1	Washer	
1-13	24013-01	1	Washer	
1-14	24011-02	1	Nut	
1-15	24012-01	1	Preload socket	
1-16	24011-01	1	Nut	
1-17	24010-01	1	Spring support	
1-18	08790-95	1	Spring	
1-19	24007-01	1	Adjustment rod	
1-20	04776-02	2	Circlip	
1-21	02302-15	1	Guide sleeve	
1-22	04775-05	1	Bumb stop support	
1-23	04774-01	1	Bumb rubber	
1-24	24009-01	1	Guide ring	
1-25	24008-01	1	Preload tube	
1-26	24005-01	1	Shaft	
1-27	24006-01	1	Seal head	
1-28	04752-05	1	Washer	
1-29	04769-01	1	Bushing	

Pos	Part No	Pcs	Description	Notes
1-30	01653-08	1	Spring guide	
1-31	04792-02	1	Spring	
1-32	24004-01	1	Needle	
1-33	04727-09	1	Spring	
1-34	04773-07	1	Piston holder	
1-35a	24013-04	3	Washer	Rebound side
1-35b	24013-04	4	Washer	Compression side
1-36	04727-02	1	Spring	
1-37	04734-02	1	Spring collar	
1-38	04729-01	1	Shim	
1-39	04765-01	1	Piston	
1-40	04798-02	1	Piston ring	
1-41			Shims	See spec.
1-42	04733-01	1	Clamp collar	
1-43	04777-03	1	Nut	
1-44a	04772-10	1	Cylinder tube	Rebound side
1-44b	04772-27	1	Cylinder tube	Compression side
1-45	24003-01	1	Inner fork leg	
1-46	04724-02	1	Bushing	
1-47	04721-03	1	Scraper	
1-48	04759-01	1	Circlip	
1-49	04720-02	1	Seal	
1-50	04758-01	1	Washer	
1-51	04724-01	1	Bushing	
1-52	24002-01	1	Outer fork leg	
1-53	04722-20	1	O-ring	
1-54a	24001-02	1	Fork bottom	Rebound side
1-54b	24001-01	1	Fork bottom	Compression side
1-55	04757-16	2	Screw	

SPL FG 621 (BLACK)

Pos	Part No	Pcs	Description	Notes
1-1	04747-04	1	Cap	
1-2	04756-03	1	Adjuster	
1-3	04722-04	1	O-ring	
1-4	00884-04	2	Ball	
1-5	04727-01	1	Spring	
1-6a	24015-02	1	Adjuster Preload	Rebound side
1-6b	24015-01	1	Adjuster Preload	Compression side
1-7	24014-02	1	O-ring	
1-8	24013-03	1	Washer	
1-9	24014-01	1	O-ring	
1-10	24016-01	1	Adjustment housing	
1-11	24014-03	1	O-ring	
1-12	24013-02	1	Washer	
1-13	24013-01	1	Washer	
1-14	24011-02	1	Nut	
1-15	24012-01	1	Preload socket	
1-16	24011-01	1	Nut	
1-17	24010-01	1	Spring support	
1-18	08790-95	1	Spring	
1-19	24007-01	1	Adjustment rod	
1-20	04776-02	2	Circlip	
1-21	02302-15	1	Guide sleeve	
1-22	04775-05	1	Bumb stop support	
1-23	04774-01	1	Bumb rubber	
1-24	24009-01	1	Guide ring	
1-25	24008-01	1	Preload tube	
1-26	24005-01	1	Shaft	
1-27	24006-01	1	Seal head	
1-28	04752-05	1	Washer	
1-29	04769-01	1	Bushing	

Pos	Part No	Pcs	Description	Notes
1-30	01653-08	1	Spring guide	
1-31	04792-02	1	Spring	
1-32	24004-01	1	Needle	
1-33	04727-09	1	Spring	
1-34	04773-07	1	Piston holder	
1-35a	24013-04	3	Washer	Rebound side
1-35b	24013-04	4	Washer	Compression side
1-36	04727-02	1	Spring	
1-37	04734-02	1	Spring collar	
1-38	04729-01	1	Shim	
1-39	04765-01	1	Piston	
1-40	04798-02	1	Piston ring	
1-41			Shims	See spec.
1-42	04733-01	1	Clamp collar	
1-43	04777-03	1	Nut	
1-44a	04772-10	1	Cylinder tube	Rebound side
1-44b	04772-27	1	Cylinder tube	Compression side
1-45	24003-02	1	Inner fork leg	
1-46	04724-02	1	Bushing	
1-47	04721-03	1	Scraper	
1-48	04759-01	1	Circlip	
1-49	04720-02	1	Seal	
1-50	04758-01	1	Washer	
1-51	04724-01	1	Bushing	
1-52	24002-02	1	Outer fork leg	
1-53	04722-20	1	O-ring	
1-54a	24001-02	1	Fork bottom	Rebound side
1-54b	24001-01	1	Fork bottom	Compression side
1-55	04757-16	2	Screw	

Your Öhlins retailer:

Öhlins Racing AB
Box 722
SE-194 27, Upplands Väsby
Sweden

Phone: +46 (0)8 590 025 00
Fax: +46 (0)8 590 025 80
www.ohlins.com



www.ohlins.com